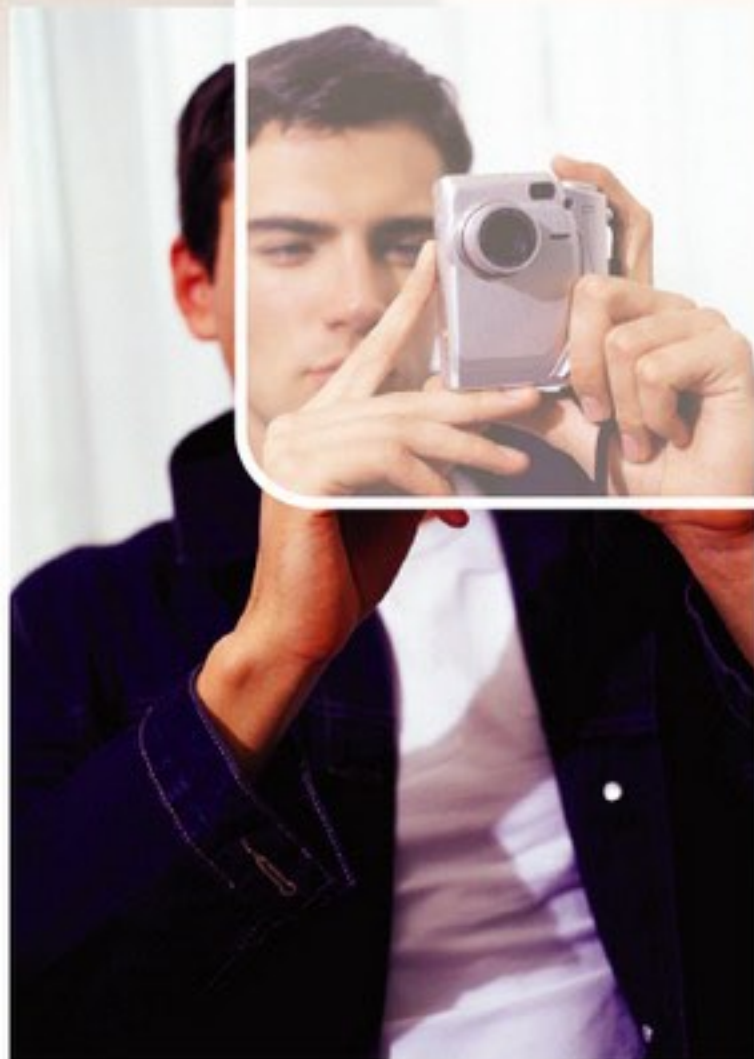


# Multimedia Card



## FEATURE

- ▶ High Speed : Maximum Read / Write = 2.3MB / 2.2MB(condition apply)
- ▶ Excellent Reliability and Compatibility
- ▶ Support SPI mode
- ▶ Support Data Bus Width: 1 bit
- ▶ Support Lock / Unlock Command
- ▶ Support Write Protect Command
- ▶ Support Erase Command
- ▶ High Storage Capacity: Up to 1GB
- ▶ Support ECC Circuits to Protect Data Communication
- ▶ Compact for Portability



## BASIC SPECIFICATION

- ▶ Specification : MMC 3.1
- ▶ Dimension: 32mm(L) x 24mm(W) x 1.4mm(H)
- ▶ Operating Voltage: 2.7V ~ 3.6V
- ▶ Operating Temperature: 0°C ~ 60°C
- ▶ Storage Temperature: -20°C ~ 85°C
- ▶ Low Power Consumption For Portable Device.
  - Sleep Current < 150uA
  - Read Operation < 60mA
  - Write Operation < 60mA



MMC logo are trademarks of MMC Association.  
Other brands and products are trademarks of their respective holders.  
Specification subject to change without prior notice.  
Release Date: 25. April. 2005

